

ADAS(Advanced Driver-assistance System)



SHORT-RANGE RADARS



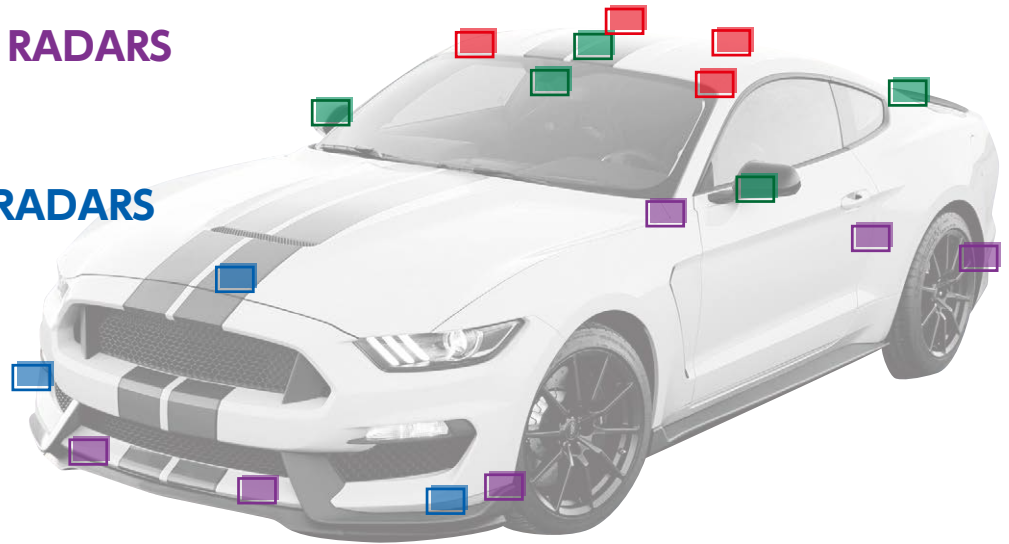
LONG-RANGE RADARS



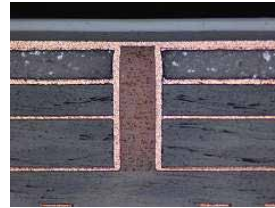
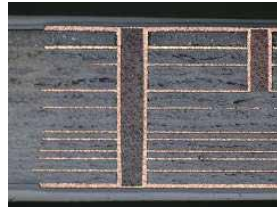
CAMERAS



LIDARS



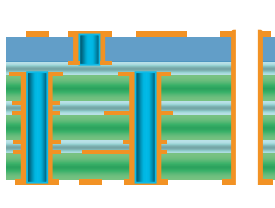
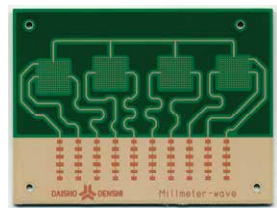
SHORT-RANGE RADARS



- Hybrid Construction
- Low Dk, Df material is available
- Reduce transmission loss



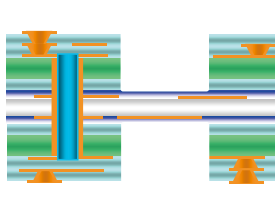
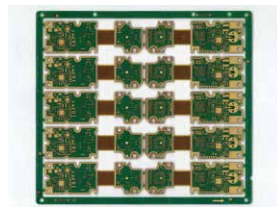
LONG-RANGE RADARS



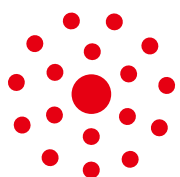
- Hybrid Construction
- Teflon, LCP material is available
- Reduce transmission loss more effectively



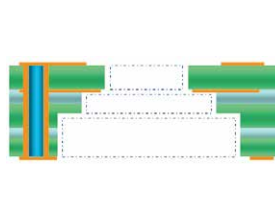
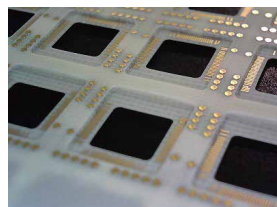
CAMERAS



- Flex-Rigid
- Connector-less
- Reduce noise



LIDARS



- Often used for Sensors
- Cavity construction

ADAS(Advanced Driver-assistance System)



SHORT-RANGE RADARS



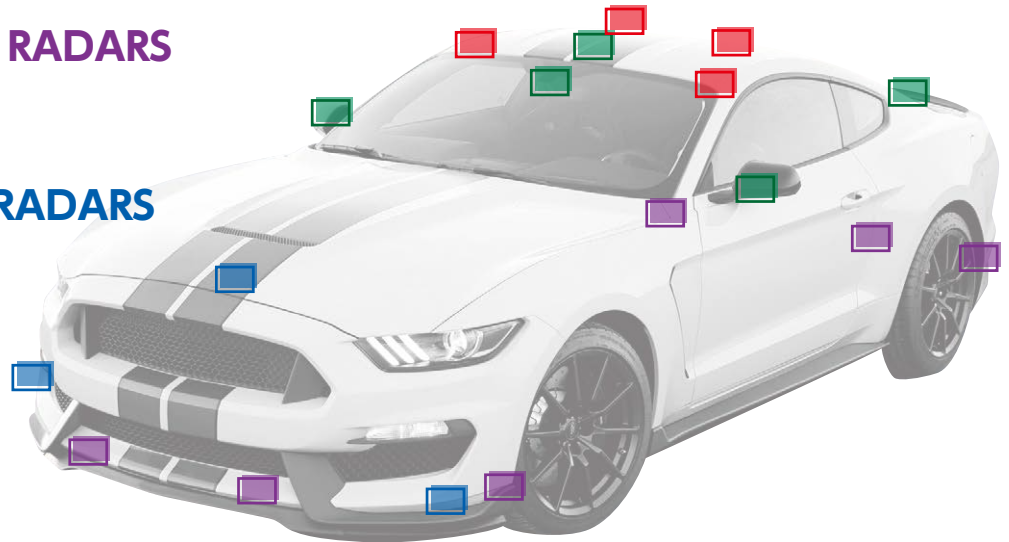
LONG-RANGE RADARS



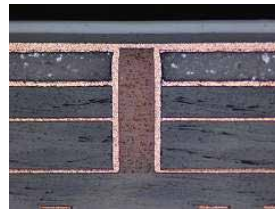
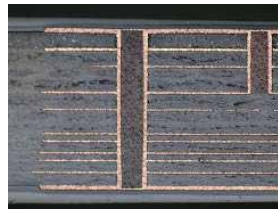
CAMERAS



LIDARS



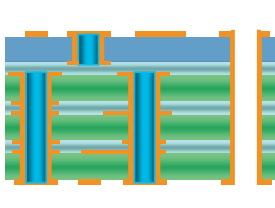
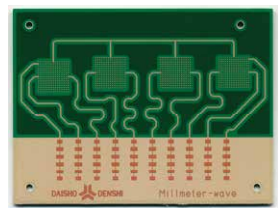
SHORT-RANGE RADARS



- ハイブリッド構造
- Low Dk,Df材採用
- 伝送ロス低減



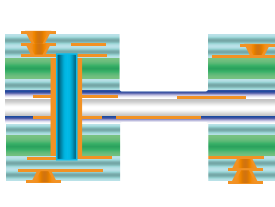
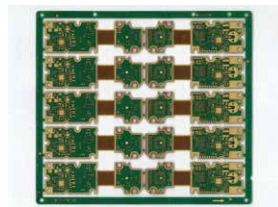
LONG-RANGE RADARS



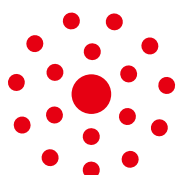
- ハイブリッド構造
- テフロン,LCP材採用
- 伝送ロスを更に低減



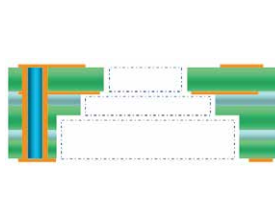
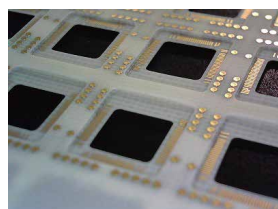
CAMERAS



- フレックスリジッド
- コネクタレス
- ノイズ抑制



LIDARS



- センサー基板に多数採用
- Cavity 構造